

ROSSETTI



504 1555 EASTERN AVENUE

CENTRAL LONSDALE, NORTH VANCOUVER



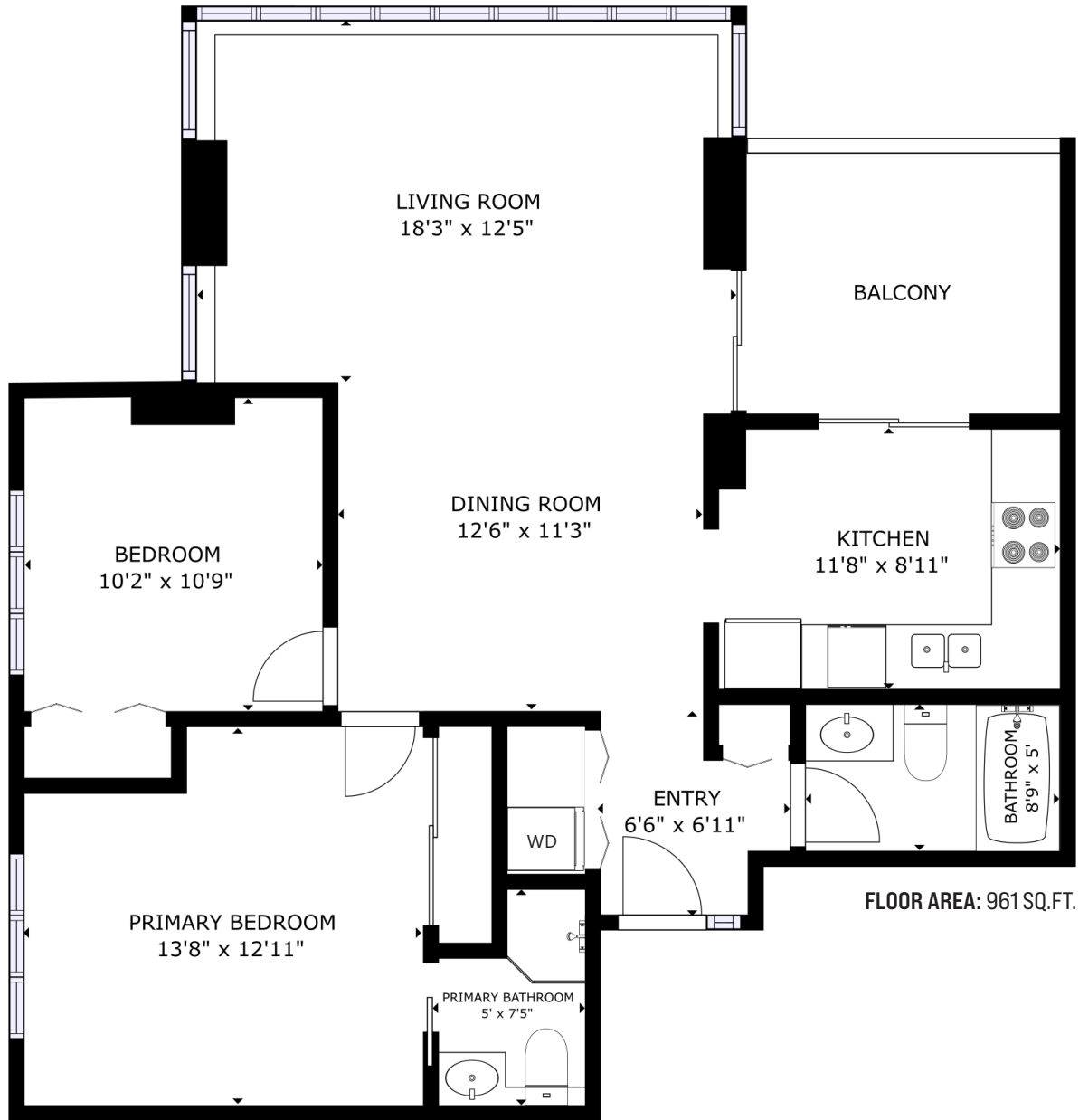
SOUTHWEST CORNER 2 BDRM SUITE AT 'THE SOVERIEGN'

2 Beds | 2 Baths | 961 Sq/Ft Condo

■ Southwest corner suite at 'The Sovereign' in the heart of Central Lonsdale. This well-maintained home offers 2 bedrooms, 2 bathrooms, and 961 sq/ft with a bright exposure and sweeping city skyline, mountain, and sunset views. Offering a practical floor plan with spacious rooms throughout perfect for your house sized furniture. The open plan living/dining room offers an abundance of windows to enjoy the outlook, and features sliders to a west facing balcony with stunning views of the Lions. The kitchen is a comfortable size and includes a built-in eating table and sliders to the balcony. The primary bedroom features a large closet, ample space for added wardrobes, and has a 3-piece ensuite. The second bedroom is great for family, as an office, or a guest room. Completing the home is a 4-piece bathroom and a large laundry closet. Includes 1 secured parking space and a storage locker. The Sovereign is a well-regarded building situated in an awesome central location with all Lonsdale amenities at your doorstep including City Market, an off-leash dog park across the street, a quick walk to the Hospital, and near Library Square, Whole Foods, and all the area's great shops and restaurants.







Interior square footage from strata plan. Layout and measurements from Matterport. Square footage, room measurements, & dimensions are approximate and not guaranteed. Information should not be relied upon without independent verification. This communication is not intended to cause or induce breach of an existing agency agreement.