

Where the city does
its thing and nature
does the rest.



MARINE + FELL

Urban+
Nature+
Social Space+
Sanctuary+
City+
Food Trucks+
Markets+
Trails+
Mountains+
Sea+
Marine+
Fell
West Coast+
Modern+

Marine + Fell offers a collection of distinct contemporary homes in a location that gives you true lifestyle choices. Play in the forest above you, the sea below you or the city amenities all around you. These 1, 2 and 3 bedroom residences are immersed in thoughtful design details, and are move-in ready.

The Evolution of Home

Marine + Fell not only fits into the urban streetscape — it also stands apart in its architectural intent. Its classic facade features a bold accent detail and modern touches to perfectly balance strength with warmth.

Large balconies and terraces are designed to draw in abundant light. The street level is comfortably set back from Marine Drive, offering new shops downstairs and a welcoming plaza to gather in, just steps from home.



The developer (Anthem 725 Marine Developments LP) reserves the right to make changes and modifications to the information contained herein. Renderings and photography are representational only and are not necessarily accurate, and final design, construction and features may differ. The developer may also make such further development modifications as are permitted by the disclosure statement, as may be amended, the contract of purchase and sale between a purchaser and developer (if applicable), or otherwise. Please contact a developer sales representative for details. E. & O.E.



Urban By Nature

For those who like their city with a side of nature, the North Shore is unmatched for its abundance and access to both. Markets and dog parks, outdoor concerts and the Spirit Trail, shopping centres and rushing creeks — find them all in one special place.



1



2



3



4



5



6



7

Next Generation North Shore Experience

- 1 Heavenly European pastries and expertly made espresso make Thomas Haas a coveted neighbourhood eatery.
- 2 Take in playful harbour seals and invigorating sea air at Lonsdale Quay or at Waterfront Parks.
- 3 Hit nearby world-renowned Mount Fromme or Seymour for downhill trails.
- 4 Lower Lonsdale is a retail and dining hub, with SeaBus access straight to downtown.
- 5 From Hearthstone, Green Leaf, and Beere Brewing to Tap & Barrel, craft brews are never far.
- 6 Fresh produce is walkably close at the Quay's Farmers Market.
- 7 The 35 km Spirit Trail will connect Horseshoe Bay with Deep Cove and travel right outside your door.

Elevated Interiors

Homes at Marine + Fell have been thoughtfully planned to maximize your living space. Residences range from roomy 1 bedrooms to family-sized 3 bedroom homes, many of which feature spacious

outdoor living areas ideal for relaxing. Not only are layouts flexible and easy to furnish, they're extra bright thanks to generous windows and large balconies. Interiors are also filled with quality

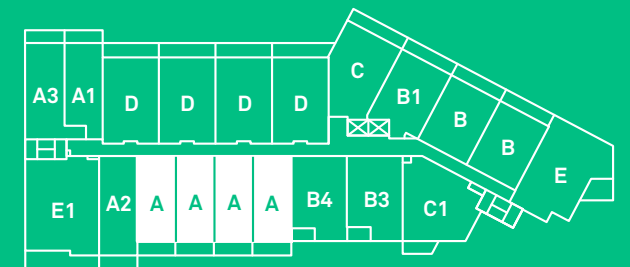
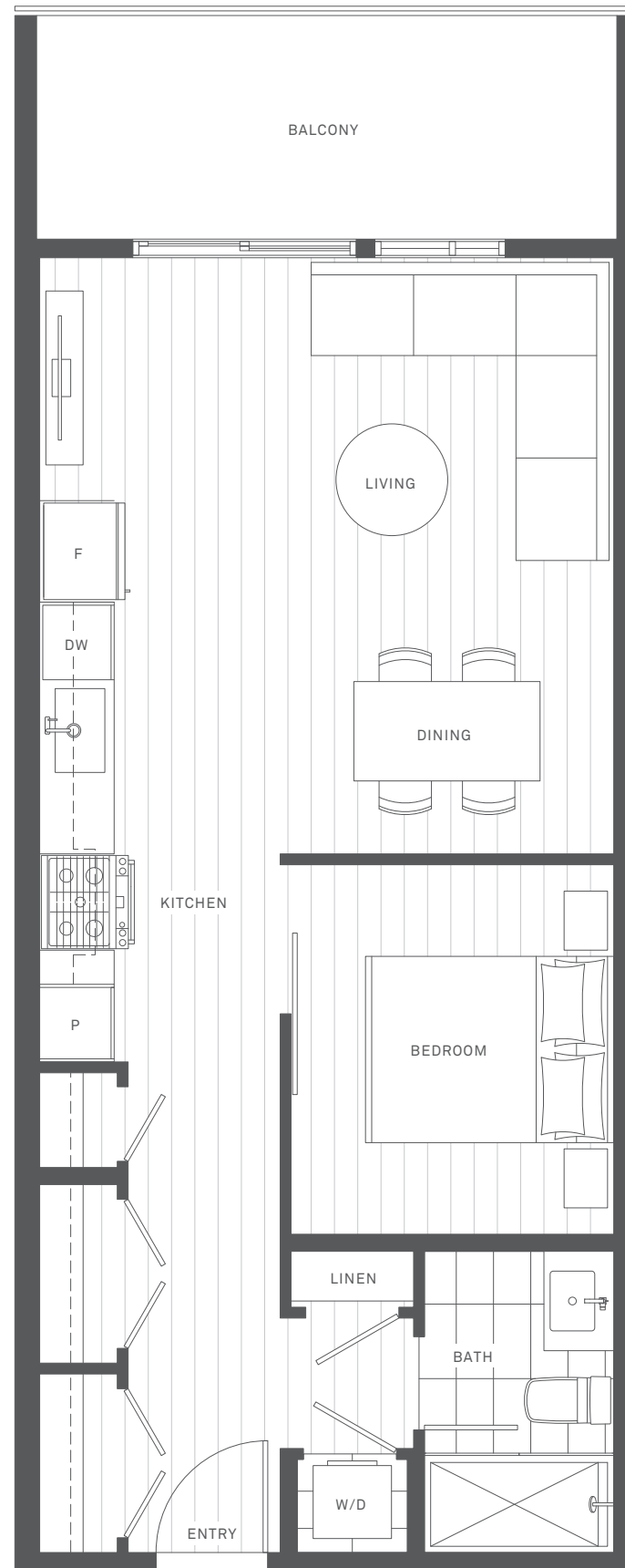
details, including quartz countertops with a travertine-inspired pattern, soft-close cabinetry, and the comfort of radiant in-floor heating throughout your entire home.



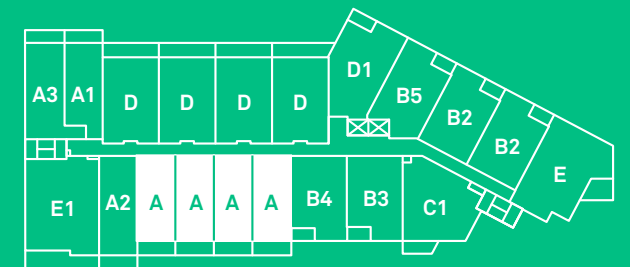
A

1 Bedroom 1 Bathroom

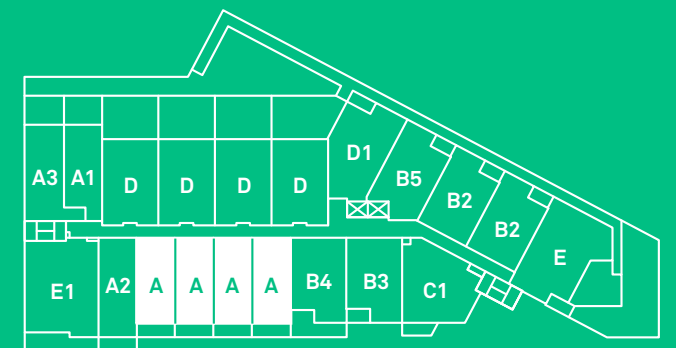
Indoor 565–567 sq ft
 Outdoor 95–97 sq ft
 Total 661–663 sq ft



LEVEL 5



LEVELS 3-4

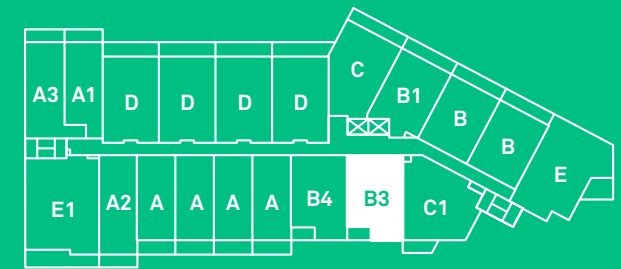


LEVEL 2

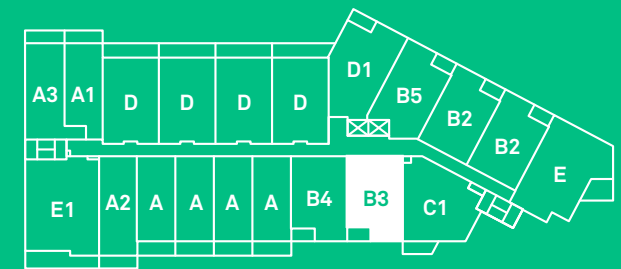
B3

2 Bedrooms
2 Bathrooms

Indoor 762 sq ft
Outdoor 50 – 56 sq ft
Total 812 – 818 sq ft



LEVEL 5



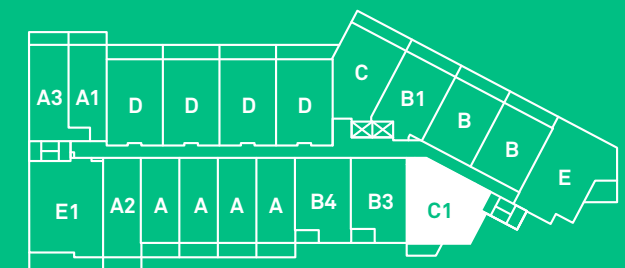
LEVELS 3-4

C1

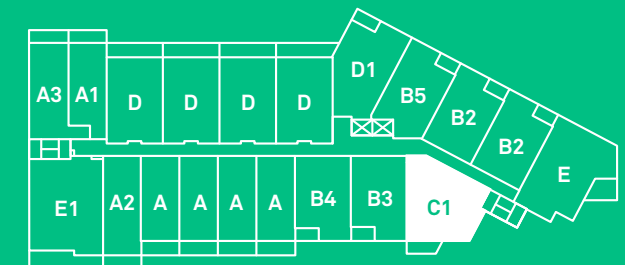


2 Bedrooms
2 Bathrooms

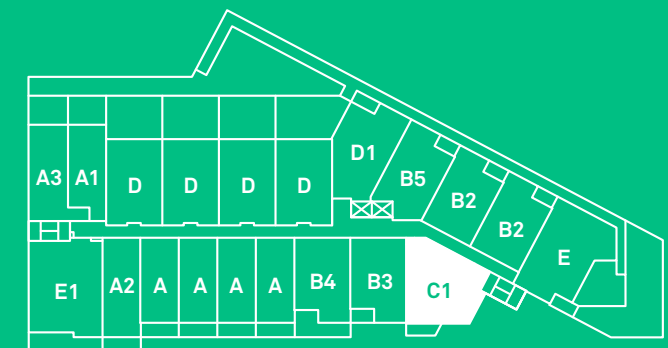
Indoor 914–917sq ft
Outdoor 70 sq ft
Total 984–987 sq ft



LEVEL 5



LEVELS 3-4

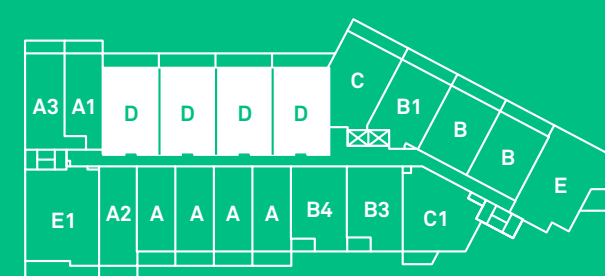
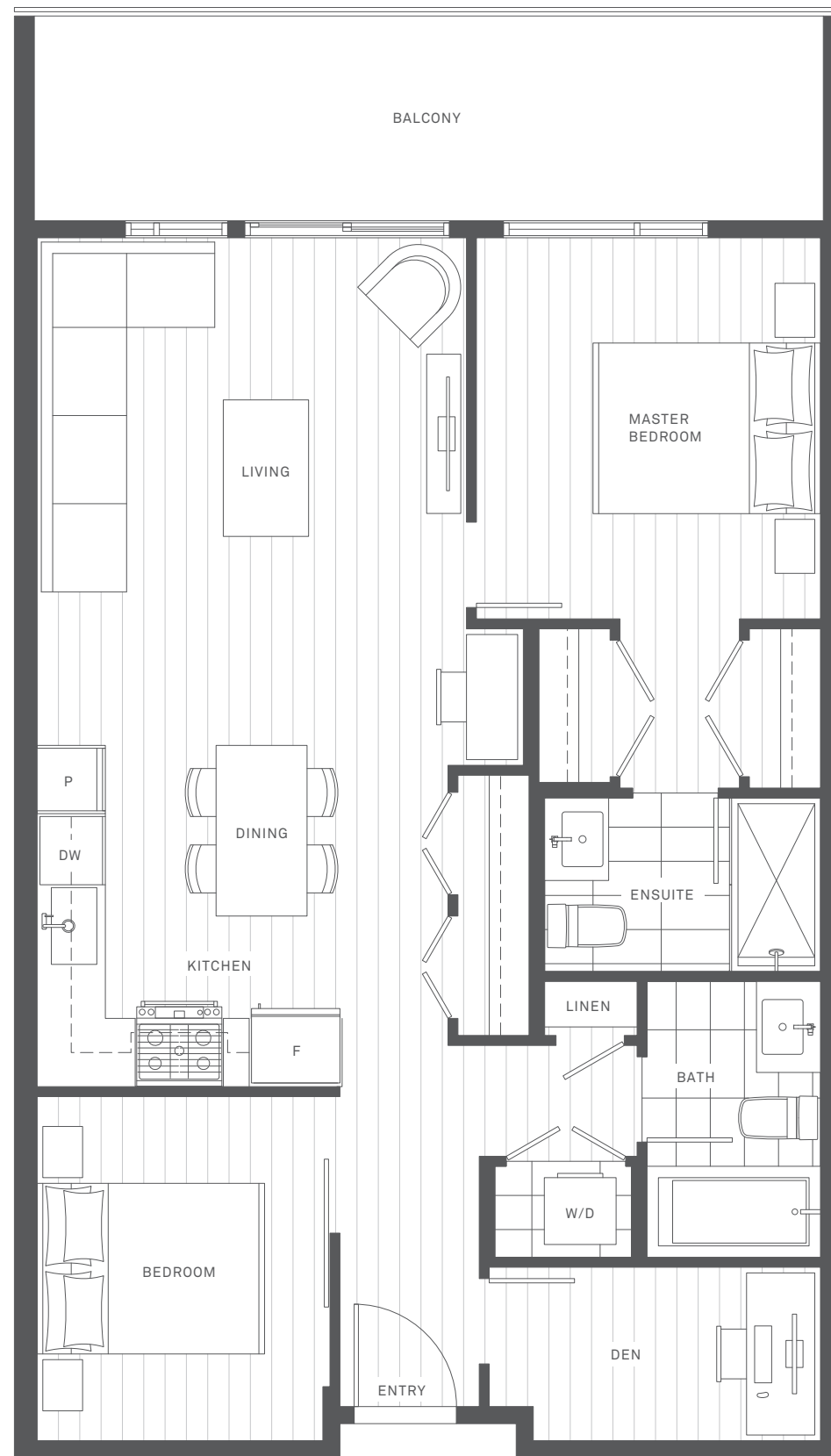


LEVEL 2

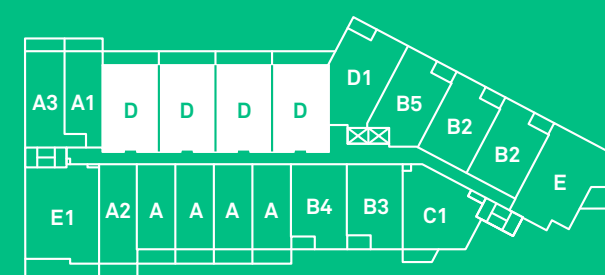
D

2 Bedrooms + Den 2 Bathrooms

Indoor 836 – 840 sq ft
 Outdoor 141 – 150 sq ft
 Total 982 – 986 sq ft



LEVEL 5



LEVELS 3-4

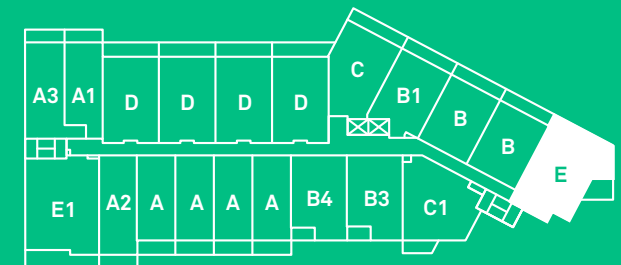


The developer (Anthem 725 Marine Developments LP) reserves the right to make changes and modifications to the information contained herein. Floorplans and floorplates are subject to change without notice. Please contact a developer sales representative for details. The developer may also make such further development modifications as are permitted by the disclosure statement, as may be amended, the contract of purchase and sale between a purchaser and developer (if applicable), or otherwise. E. & O.E.

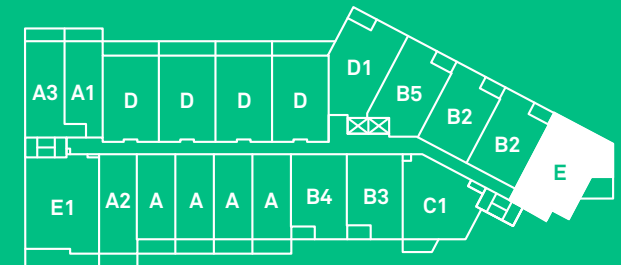
E

3 Bedrooms 2 Bathrooms

Indoor 1,063 sq ft
 Outdoor 100 sq ft
 Total 1,163 sq ft



LEVEL 5

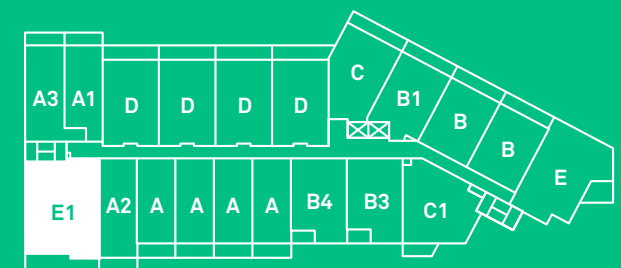


LEVELS 3-4

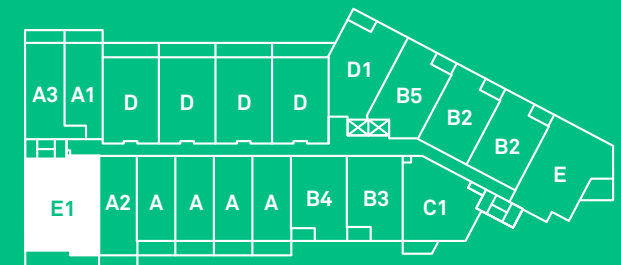
E1

3 Bedrooms
+ Den
2 Bathrooms

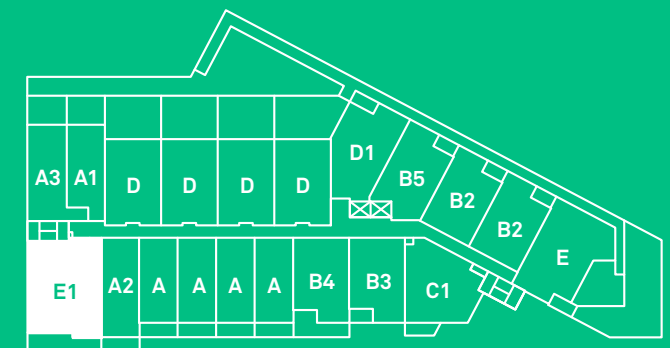
Indoor 1,189–1,196 sq ft
Outdoor 202 sq ft
Total 1,341–1,398 sq ft



LEVEL 5



LEVELS 3-4



LEVEL 2

Enter

- West Coast architecture with modern details such as brick and glass bring a defined style to the neighbourhood.
- The five-storey, wood-frame building offers convenient street-level shops and amenities.
- A lobby full of refined lines and minimalist accents includes a hint of North Vancouver whimsy, with an abstract tree branch inspired chandelier.
- The large geometric public art sculpture “You Are Here”, designed by local artist Ruth Beer, doubles as seating and a social gathering place.

Live

- Well-designed layouts showcase both innovative and classic design, allowing the space to function seamlessly.
- Interior design by award-winning North Vancouver-based firm The Mill.
- Overheight ceilings—up to 9 feet in most living areas—provide an expansive and lofty feeling.
- Each home has a bright modern colour scheme, with an open-shelf accent cabinet in light or charcoal oak.
- Enjoy the honey-toned wood laminate flooring, with luxurious in-floor radiant heating throughout.
- Energy-efficient, front-loading washer/dryer.
- Every home has a large private outdoor space, many of which offer views of the North Shore mountains or Burrard Inlet.
- Brushed chrome hardware with satin nickel door pulls.
- Horizontal blinds throughout for added privacy.

Cook

- Contemporary flat-panel cabinetry in a modern high-gloss finish.
- Timeless and durable Calacatta-inspired quartz countertops.
- Large-format backsplash has a unique grey linework that adds an elegant and simple contrast.
- Stainless steel appliance package includes:
 - Whirlpool gas range stove and oven
 - Whirlpool dishwasher
 - Integrated glide-out AEG hood fan
 - Fisher + Paykel single-door fridge with bottom-mount freezer
 - Panasonic microwave and trim kit
- Under-cabinet lighting to illuminate your prep space.
- Under-mount, single-bowl sink features a brushed stainless steel Grohe faucet with pull-down spray nozzle.
- Convenient USB charging outlets.
- Pullout waste and recycle bin container system.

Bathe

- Soft-close, flat-panel vanity cabinetry.
- Quality German fixtures by Grohe.
- Enjoy the modern vanity mirror that is cleverly hung to create a floating effect.
- Relax in the deep soaker tub and/or frameless glass shower with rainfall shower head.
- Noteworthy details include a sleek Duravit lavatory, and porcelain flooring/tile surrounds.

Amenity Bonuses

- Host parties, birthdays or other celebrations in the 1,000-square-foot common-area entertainment lounge and kitchenette.
- Marine + Fell’s generous common outdoor patio is an ideal shared space to socialize on summer nights.

Trust

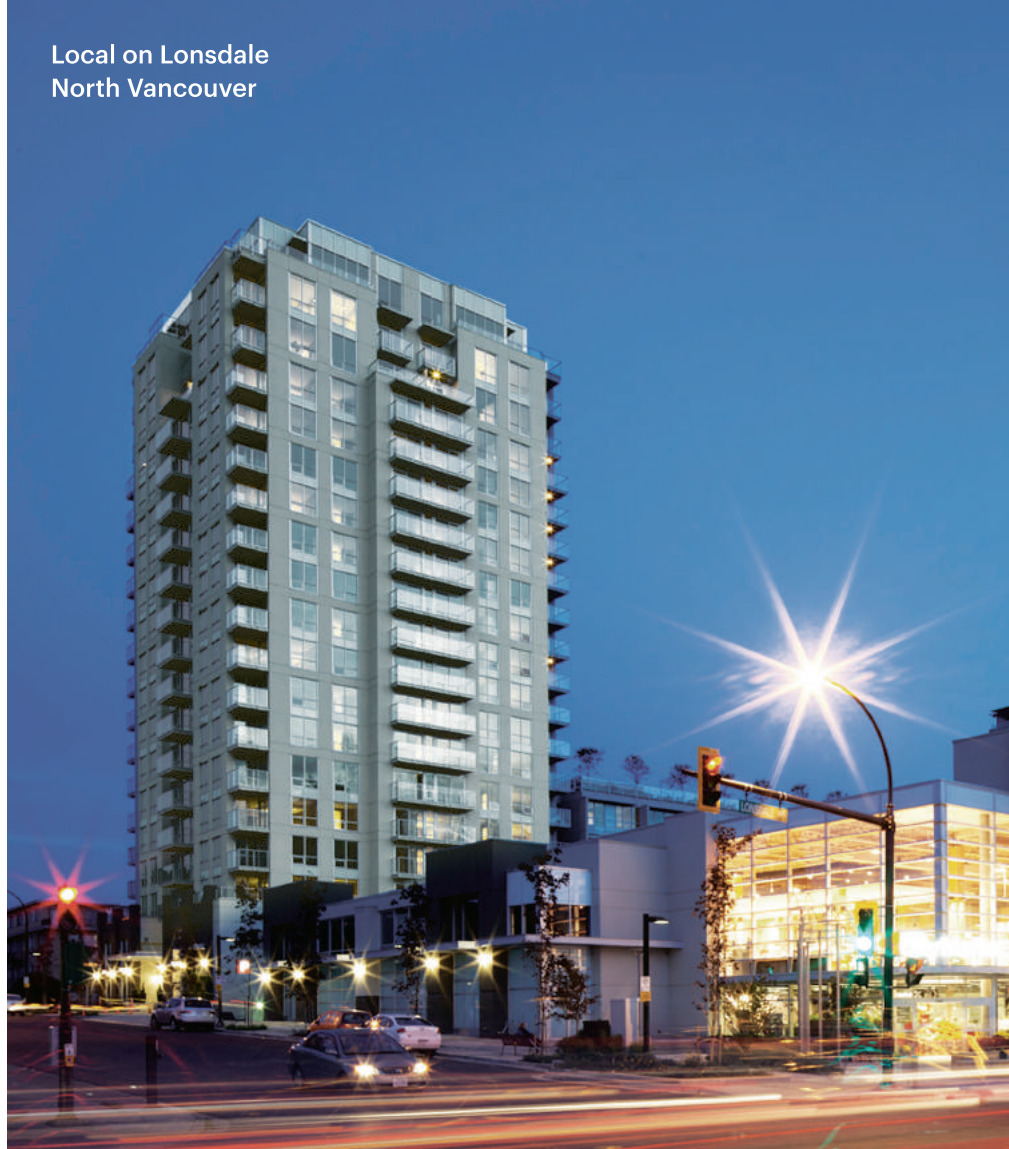
- Developed and built by Anthem, a leading local home builder known for its uncompromising commitment to design, quality and operational efficiency.
- Industry-leading Homeowner Care provided by Anthem.
- Our WBI 2-5-10 New Home Warranty means your new home is protected for up to 10 years.
- Feel extra secure with your state-of-the-art building entry system, security cameras and key fob entry.
- The well-lit residential parkade and floor-restricted elevator access means residents are safer, day and night.
- Fire sprinkler systems in all homes and common areas.

Finishes + Features

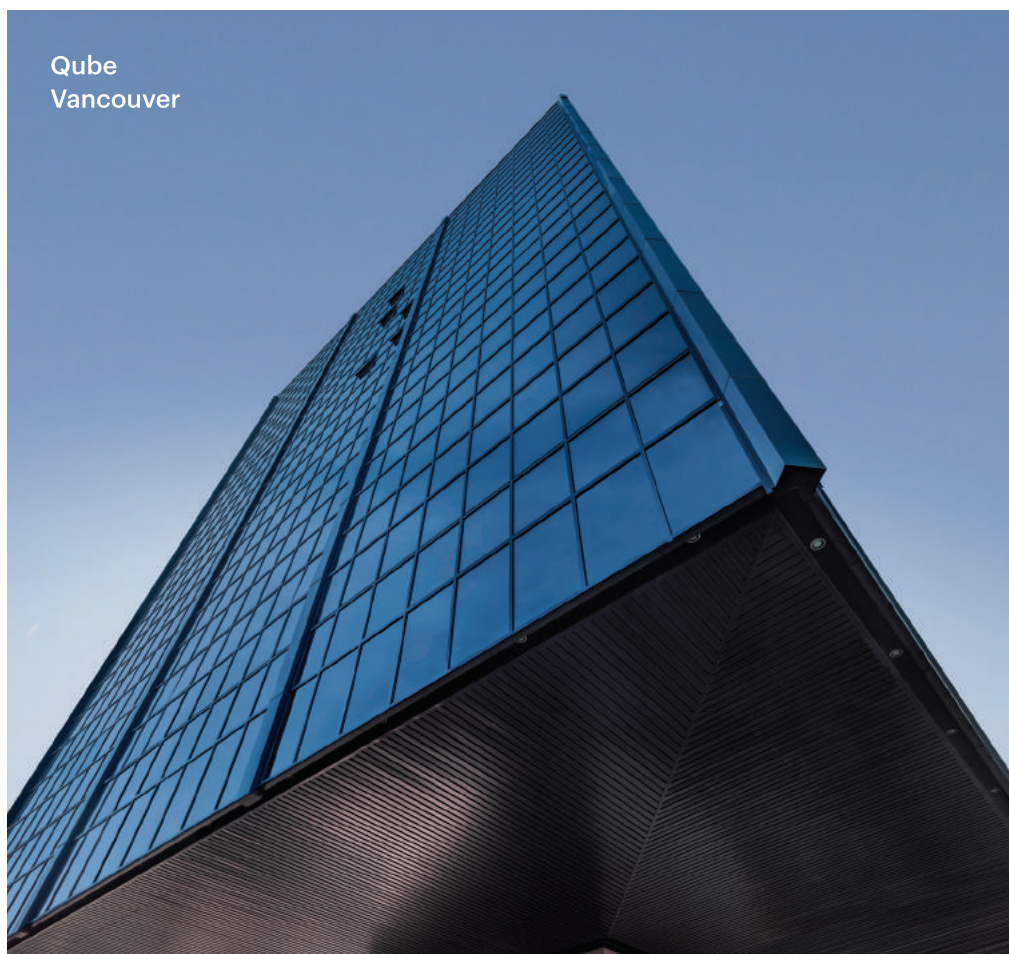
Maplewood Place
North Vancouver



Local on Lonsdale
North Vancouver



Qube
Vancouver



We are a real estate development, investment and management company that strives, solves and evolves to create better spaces and stronger communities.

Our growing residential portfolio includes more than 11,000 homes that are complete, in design or currently under construction, from master-planned mixed-use residential and multi-family to townhome and single-family communities.

We are Growing Places.

Anthem 

To view our past, current and future communities, visit us at anthemproperties.com