

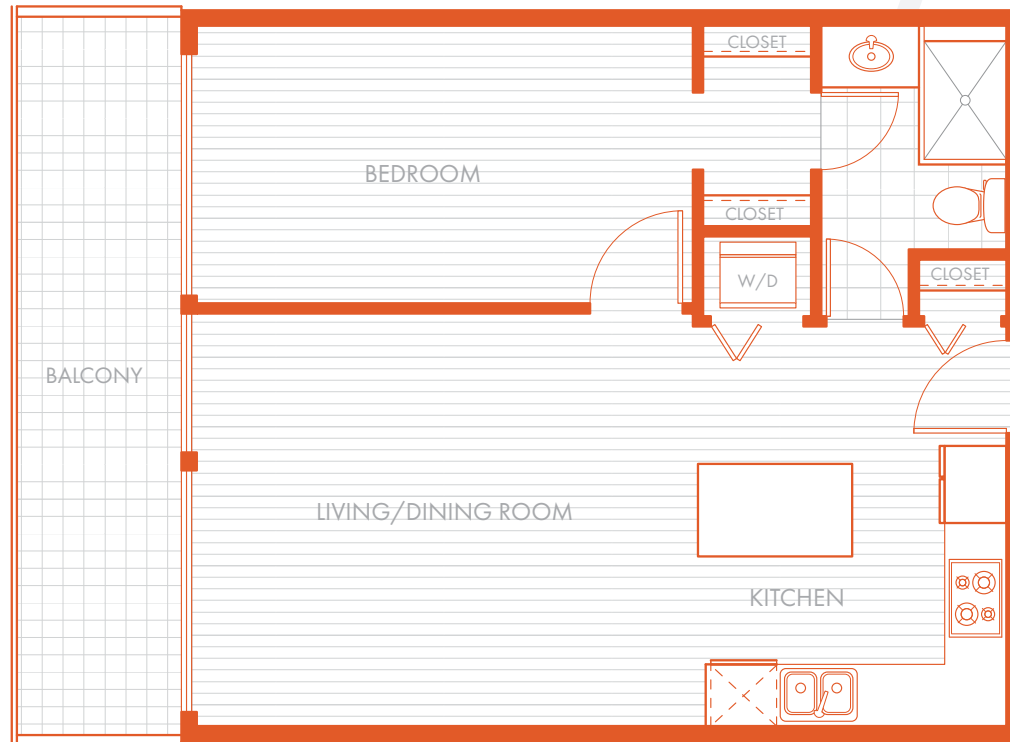
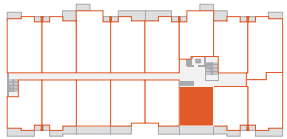
# A1

1 BEDROOM  
1 BATH  
619 SQ. FT.



Amaji  
DOWNTOWN  
SQUAMISH

FLOOR 6



1 & 2 BEDROOM HOMES  
BY KAINOS DEVELOPMENTS

THE PERFECT LOCATION  
AMAJI.CA

604-398-3636  
38033 2ND AVENUE SQUAMISH, BC

# A2

1 BEDROOM  
1 BATH  
508 SQ. FT.



Amaji  
DOWNTOWN  
SQUAMISH

FLOOR 2



1 & 2 BEDROOM HOMES  
BY KAINOS DEVELOPMENTS

THE PERFECT LOCATION  
AMAJI.CA

604-398-3636  
38033 2ND AVENUE SQUAMISH, BC

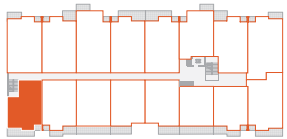
# B1

1 BEDROOM + DEN  
1 BATH  
700 - 770 SQ. FT.

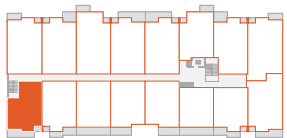


Amaji  
DOWNTOWN  
SQUAMISH

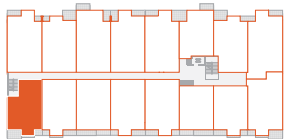
FLOOR 6



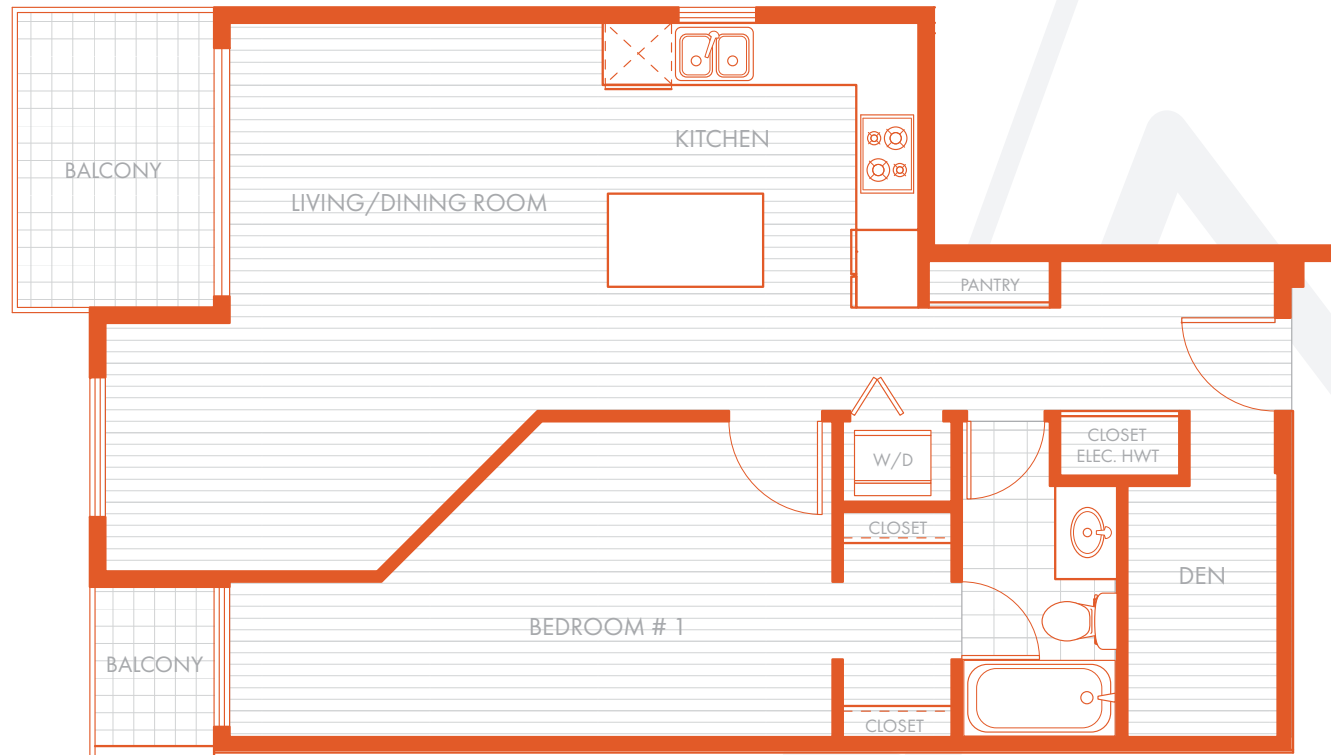
FLOOR 5



FLOOR 4



FLOOR 3



1 & 2 BEDROOM HOMES  
BY KAINOS DEVELOPMENTS

THE PERFECT LOCATION  
AMAJI.CA

604-398-3636  
38033 2ND AVENUE SQUAMISH, BC

# B2

1 BEDROOM + DEN  
1 BATH  
708 - 815 SQ. FT.

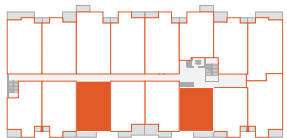


Amaji  
DOWNTOWN  
SQUAMISH

FLOOR 6



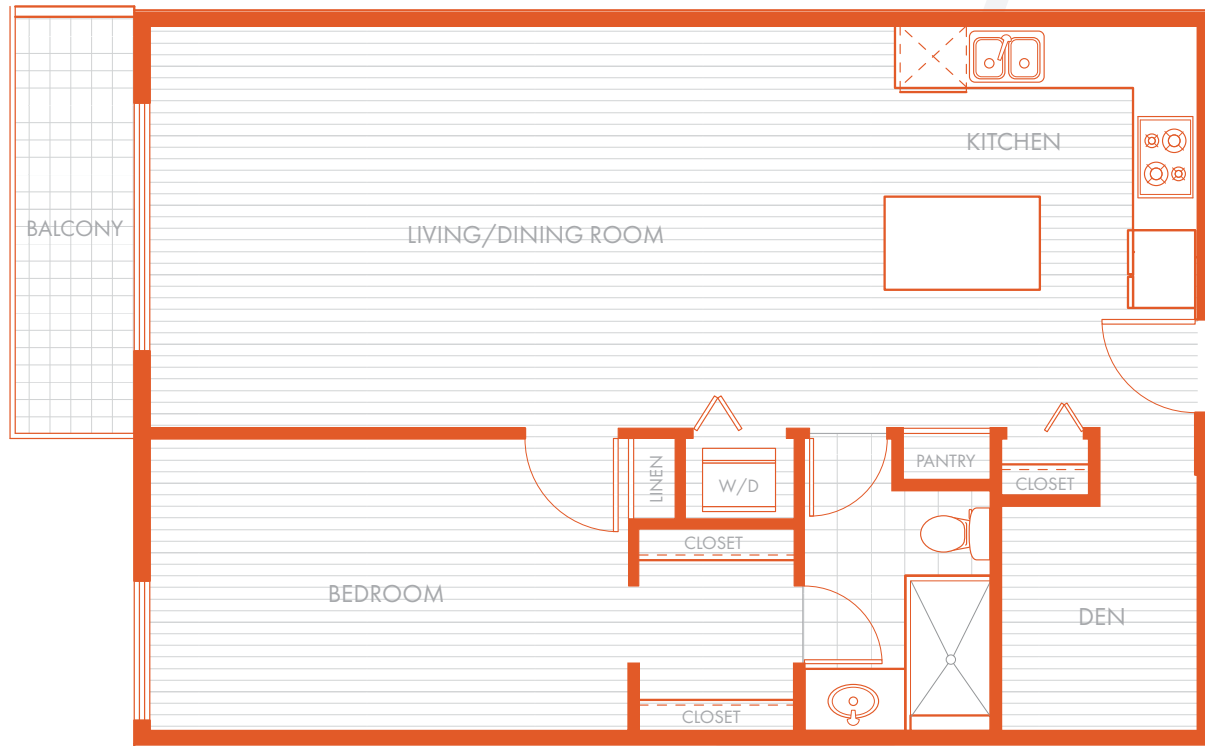
FLOOR 5



FLOOR 4



FLOOR 3



1 & 2 BEDROOM HOMES  
BY KAINOS DEVELOPMENTS

THE PERFECT LOCATION  
AMAJI.CA

604-398-3636  
38033 2ND AVENUE SQUAMISH, BC

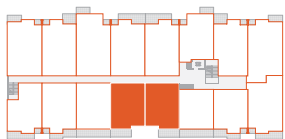
# B3

1 BEDROOM + DEN  
2 BATH  
725 - 769 SQ. FT.

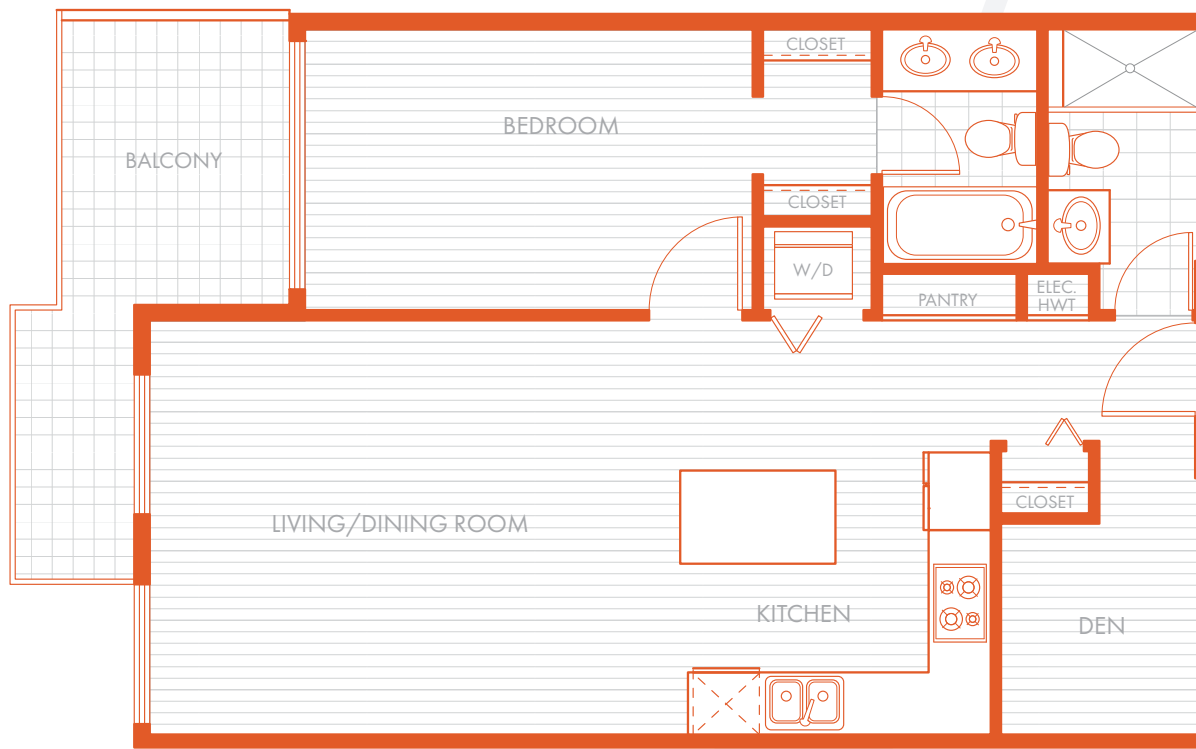


Amaji  
DOWNTOWN  
SQUAMISH

FLOOR 6



FLOOR 5



1 & 2 BEDROOM HOMES  
BY KAINOS DEVELOPMENTS

THE PERFECT LOCATION  
AMAJI.CA

604-398-3636  
38033 2ND AVENUE SQUAMISH, BC